

# Leaving Certificate Music

## Themes and Features

Pierce Cullen

Deane

### Seachanges with Danse Macabre - Bars 1 - 16

♩ = 80

2015: • This excerpt is taken from *the beginning of the work*.

- *Flageolet*: Play harmonics.
- 3 note cells use the notes G, A, C. It is played in the upper extremes of the register of piano, piccolo and crotales. They are also interspersed with bars of silence.

### Seachanges with Danse Macabre - Bars 37 - 44

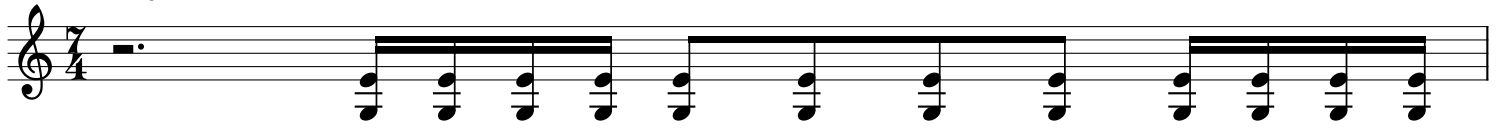
♩ = 63

2015: • This is the Main Melody/ Theme 1.

- The accompaniment features the following rhythm: See Music.
- This rhythm is played by the: crotales/ violin/ cello/ marimba/ maracas.
- This theme features: Subtraction, inversion and diminution.
  - ▶ Subtraction: The subtraction of note(s) from a given phrase, after each repeat.
  - ▶ Inversion: Turn a musical motif upside down. E.g. CEG -> CAF.
  - ▶ Diminution: Shortening note values.

## Seachanges with Danse Macabre - Bars 141 - 157

♩ = 120



- 2015:** • The texture of this theme (Danse Macabre) is polyphonic, with the violin melody clashing with the interspersed clusters on marimba and piano, with a counter melody being played on the flute.
- The flute plays the Dies Irae Theme, utilising diminution and other features such as: stepwise motion mixed with small leaps, ornamentation.
  - He evokes death by using themes with dark undertones.  
For example; Danse Macabre = Dance of Death and Dies Irae = Day of judgment.  
He also creates a sparse/ lonely mood with the use of silent bars.  
He also unsettles the listener by using metric modulations to creates an unsteady pulse; evoking death.