

Leaving Certificate Music

Themes and Features

Pierce Cullen

Mozart

Mozart Piano Concerto No. 23 in A, Movement 3 - Allegro Assai - Bars 1 - 16

$\text{♩} = 135$

Piano in Blue, Orchestra in Red. No sheet music excerpt was given in this exam question.

2016: • This excerpt is from the *exposition* of the 3rd Movement.

- The tempo is *Allegro Assai*.
- This melody features; *Octave leaps, triadic movement, ornamentation (Grace Notes), quaver movement, stepwise motion...*
- The accompaniment features an *Alberti Bass* where the LH plays broken chords.
- The excerpt from bars 1-8 ends with a *rising scale*. (See Music).
- The second half is played by *tutti* orchestra, with the removal of all ornamentation. (See Music).
- The excerpt finishes on a *perfect cadence*.

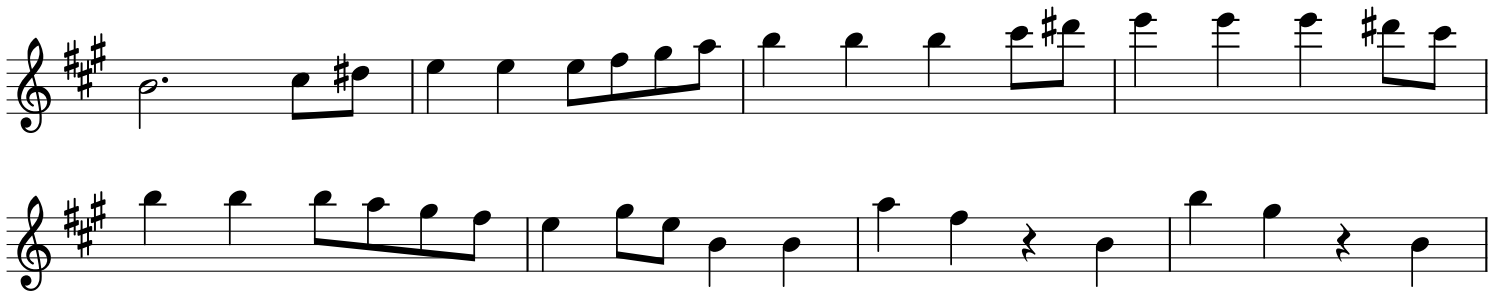
Mozart Piano Concerto No. 23 in A, Movement 3 - Allegro Assai - Bars 62 - 105

Not given in Excerpt

2016: • From Bar 9, the melody is played by the clarinets.

- From Bar 9, the piano features; *Scale movement, ornamentation, chromatic passing tones, sequences, bass in 8^{ve}'s*

Mozart Piano Concerto No. 23 in A, Movement 3 - Allegro Assai - Bars 176 - 201



- 2016:**
- During this excerpt, the strings are playing *pizzicato*.
 - The music which follows this excerpt is the Main Theme, played on solo piano.
 - The form of this movement is Sonata-Rondo Form, this is a mixture between Sonata and Rondo Form, where there is an Exposition, development and recapitulation, but within those there is a reoccurring theme, e.g. ABA for Exposition, C for Development and ABA for Recapitulation.

Mozart Piano Concerto No. 23 in A, Movement 2 - Adagio - Bars 53 - 68



- 2015:**
- This excerpt is taken from the *Al Section*.
 - The tempo marking for this section is *adagio*.
 - In Bar 12, there is an *interrupted cadence*.
 - The piano accompaniment is the *sicilienne style*.
It also features; *block chords, crochet-quaver movement*.
 - The coda section of this movement features; *pizzicato strings playing broken chords, reference to theme 2 on flute, clarinet and bassoon, ends on repeated tonic chords*.

Mozart Piano Concerto No. 23 in A, Movement 1 - Allegro - Bars 61 - 82

$\text{♩} = 110$

- 2014:**
- This excerpt is from the *Exposition* (Second Section).
 - Alberti Bass: A broken chord accompaniment figure played in the LH piano.
 - In Bar 5, strings accompany the piano.
 - The excerpt finishes on a perfect cadence.